





More than just a Performance Management Solution

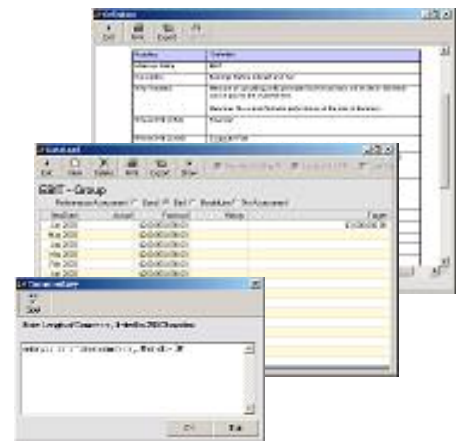


**Display type:** Design your own chart and tabular report styles, or use built – in templates. Create your own templates for corporate look and feel.

**Configure:** Powerful Administration tools make this a breeze! Create a new chart or report in seconds! reFlector can hold thousands of performance items and years of history. Set user permissions – all through the one interface.



**Data Entry:** Have data summarised or linked from your corporate data sources automatically, or enable nominated users to enter data directly into your charts and tables, define each item, enter performance commentary.



**Custom Reports:** Design reports to extract detail from any of your corporate databases. Link information from multiple databases within one report! Automatically generate your end of month reports – no more cutting and pasting!

## reFlector – at a glance

- **Easy-to-use, powerful, single source performance management solution:** now in its third generation, reFlector is easier to use, more flexible and more powerful. Capable of providing all performance related information– quantitative and qualitative - for every person in your business needing to know how they, or their part of the business, is performing. And you don't need an army of consultants to tell you how to run and maintain it.
- **System Requirements:** Client: Celeron 500Mhz processor, 10MB Hard Disk space, Microsoft Windows NT (SP5 or later), 2000 or XP, 256 MB Ram , MDAC 2.5 (or later), Internet Explorer 5.5 (or later), monitor 15" 800x600 resolution, 256 colours; Server: Oracle or SQL Server with appropriate user licensing, configuration dependent on number of users, usage patterns and volume of data stored.
- **Documentation:** reFlector includes a thorough on-line help system designed for users as well as administrators, with samples templates and code.
- **Technical Support:** reFlector is supported by a dedicated team of knowledgeable personnel; and a well maintained web site with on-line samples, updates, and answers to frequently asked questions.

### reFlector Systems Pty Ltd

PO Box 283, Alderley, QLD, Australia, 4051

Ph 07 3356 0040

Fax 07 3311 4259

Email [info@reflectorsystems.com.au](mailto:info@reflectorsystems.com.au)

Web [www.reflectorsystems.com.au](http://www.reflectorsystems.com.au)